


traser[®]

swiss watches

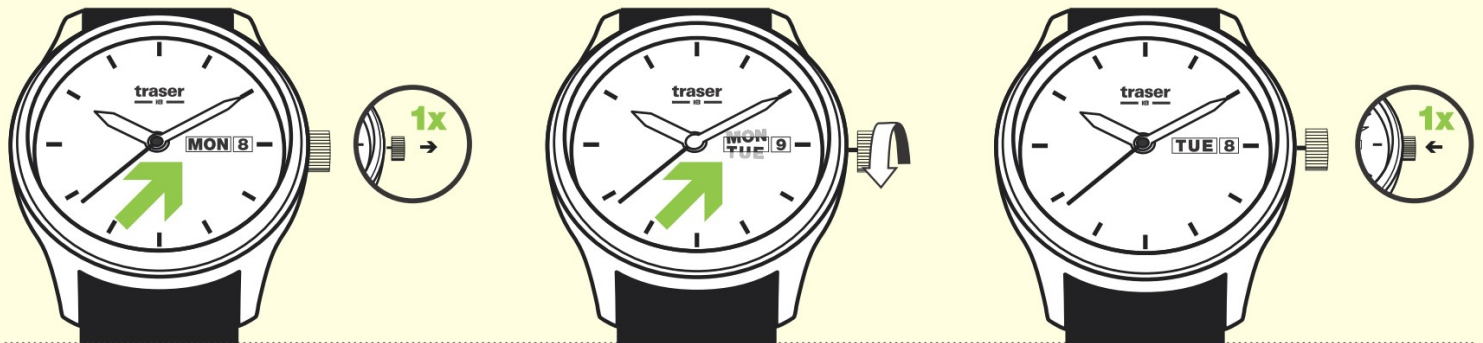
INSTRUCTIONS QUARTZ / DAY-DATE

Terms and conditions of our warranty & maintenance tips available under following link:

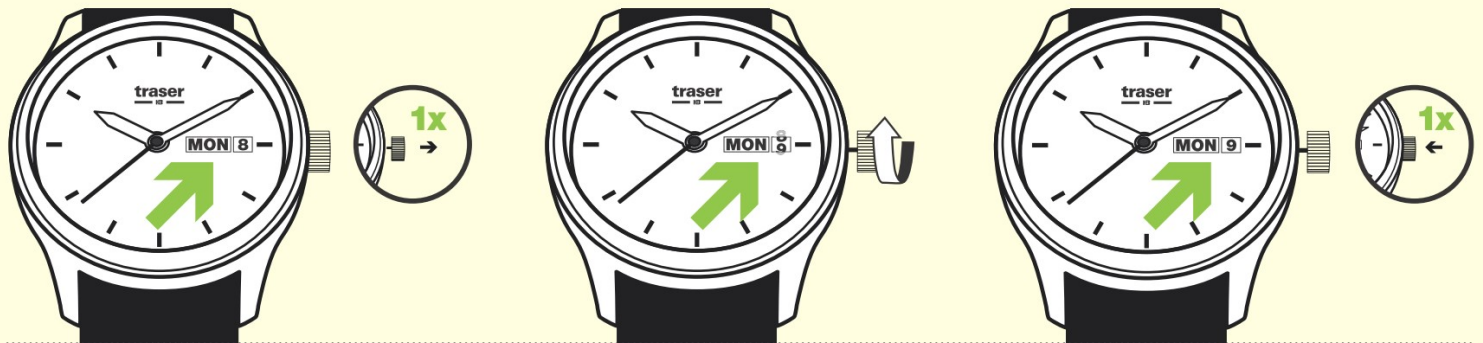
www.traser.com/customer-service/warranty

 In the case of a screw-down crown, unscrew the crown before, and screw it back in after setting your watch.

DAY ADJUSTMENT



DATE ADJUSTMENT



TIME ADJUSTMENT

