


traser[®]

swiss watches

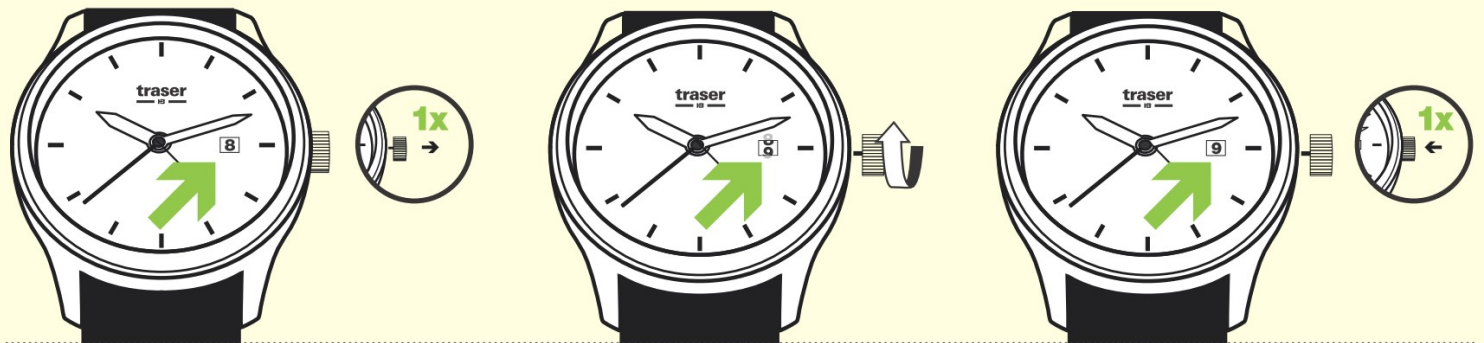
INSTRUCTIONS GMT WATCH

Terms and conditions of our warranty & maintenance tips available under following link:

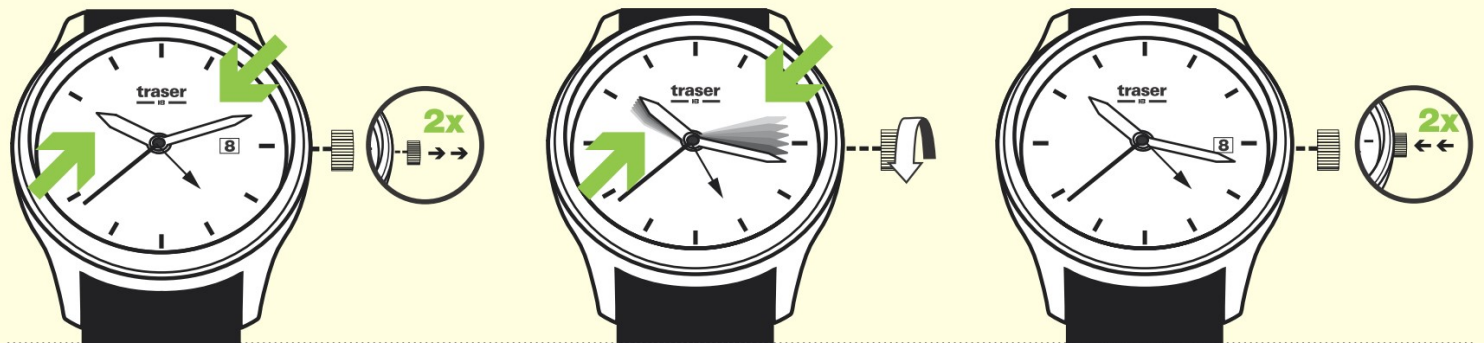
www.traser.com/customer-service/warranty

 In the case of a screw-down crown, unscrew the crown before, and screw it back in after setting your watch.

DATE ADJUSTMENT



TIME ADJUSTMENT



GMT ADJUSTMENT

